

City Council
May 27, 2026

The below items are either late material related to an item on the council agenda or written public comment. This document is published on the city website along with the council packet in the Other section. It is updated the Friday before the associated council meeting and again after 3:30pm the Tuesday before a council meeting, as this is the deadline for submitting written public comment.

LATE MATERIAL:

- 1.
- 2.

PUBLIC COMMENT:

1. JoAnn Lazon – Arts Commission
2. Bill Henkel – Support Letter for Katya Matsko

OTHER:

1. Councilmember Lavacca – City Beautification Ideas, paper copies held up and referenced related to the discussion of the Arts Commission

To: Sedro-Woolley City Council

Attn: Kelly Kohnken

From: JoAnn Lazon, 2026 Sedro-Woolley Arts Commission

Ref: Comment letter for City Council packets-Meeting on May 27th, 2026

City Council,

As the current Arts Commission Secretary-Treasurer, I am expressing my wishes to give the current Arts Commission a chance to succeed in our current projects.

The past financial information came up at the May 13th council meeting by Mayor Kesti that most of the current Arts Commission had no clue about the past financial issues. I would suggest that you investigate when that Arts Commission was active and who was part of that Arts Commission. I believe that one of your fellow council members was part of that commission back when. Maybe he could shed some light on why the commission fell apart.

We, the current Arts Commission, have been together for only a couple of years and are all new volunteers. We have a very energized and community-oriented group who would love to work with the council and our community in bringing in local artists (young and old) and sponsoring events that will boost economic activity in our town.

I know that the council has a lot of other responsibilities on its plate, so this is why giving the Arts Commission permission to do most of the groundwork concerning bringing a fresh new art atmosphere to our city would work for everyone involved.

Thank you,

JoAnn Lazon, SW Arts Commission

jolazon@gmail.com



330 Pacific Place
Mount Vernon, WA 98273

Tel: (360) 416-7585

Fax: (360) 416-7599

www.CommunityActionSkagit.org

May 26, 2026

Dear Sedro Woolley City Council:

Please accept this letter of support for Katya Matsko to fill the Ward 2 City Council vacancy.

Through my interactions with Katya, I have seen someone who genuinely cares about the Sedro-Woolley community and is committed to public service. She brings professionalism, strong communication skills, and a sincere desire to help improve the community for residents of all ages and backgrounds.

Katya has been actively involved in several community-focused organizations and initiatives throughout Skagit County. She is involved with Community Action of Skagit County's CREAT Policy Committee and has also been nominated as an incoming Client Sector Board Member for Community Action. In addition, she is an active member of Skagit Rotary and has helped with community service efforts, including organizing and leading a Birthday Cake Kit project to support local families and children experiencing food insecurity in Skagit County.

One thing that stands out about Katya is her willingness to step up, collaborate with others, and bring people together around positive community initiatives. She cares deeply about giving back and making sure community members feel supported and represented. She is also dedicated to a life of public service.

It is important for local government to include younger voices and perspectives, and Katya would bring that thoughtful perspective, energy, and commitment to service to the Council, while still valuing collaboration and learning from others in the community.

I believe Katya would make a strong, committed and positive member of your Council, and an emerging leadership voice for the entire community.

Sincerely,

Bill Henkel
Executive Director



YOUTH ACTIVITIES

SKATE PARK, PICKLEBALL, DISC GOLF, BASEBALL, SOCCER, AND MANY OTHER ACTIVITIES



COMING SOON

Lots of new and exciting parks and activities in the works. Our Parks and Rec Department with the vision and support from our community makes Sedro-Woolley a great place to enjoy.

Olmsted Park Development



Memorial Park Renovation



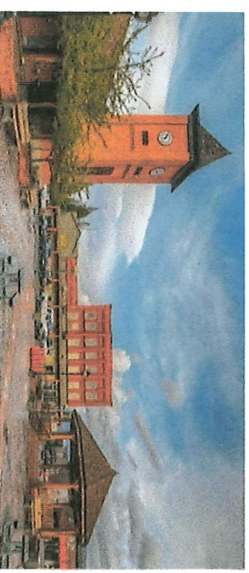
Enjoy Our Beautiful



YOUR FAMILY, FRIENDS, AND YOU, WILL FIND LOTS OF FUN PLACES AND ACTIVITIES TO ENJOY WHEN YOU TAKE ADVANCE OF ALL WE HAVE TO OFFER.

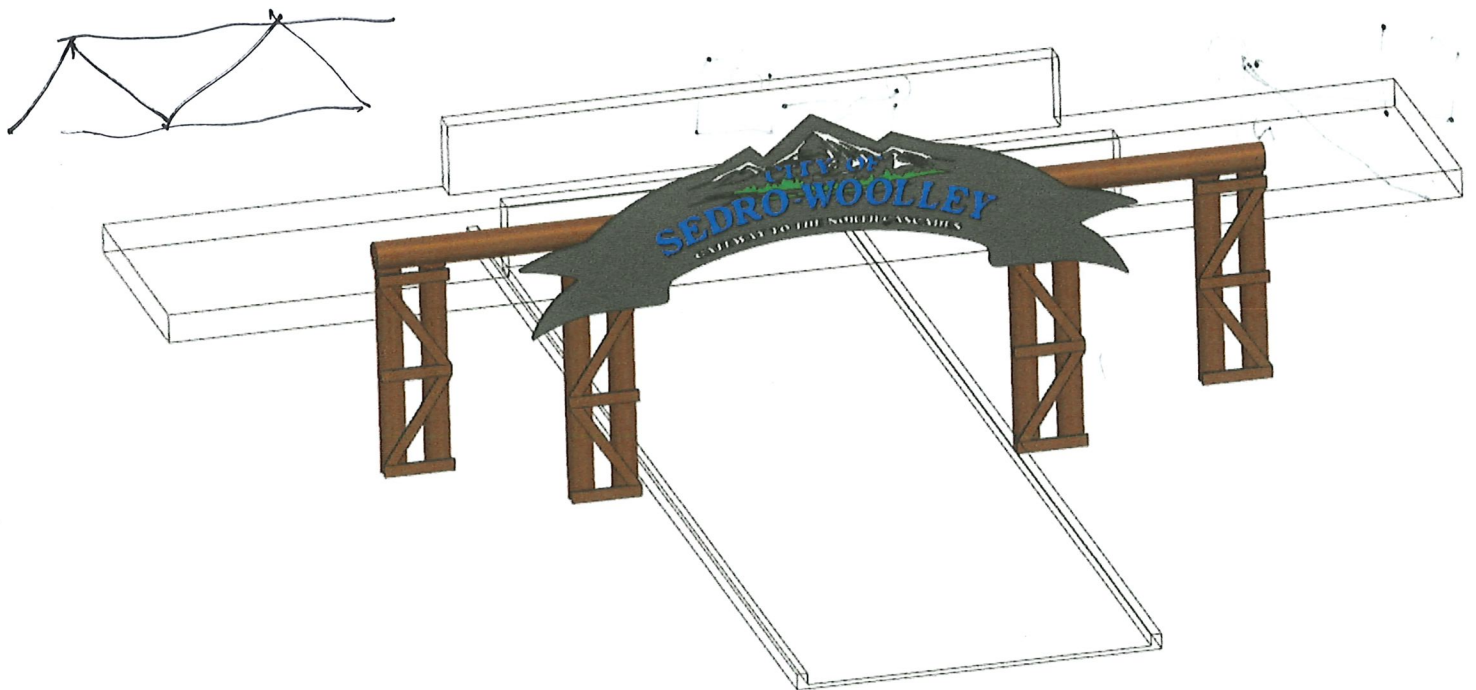
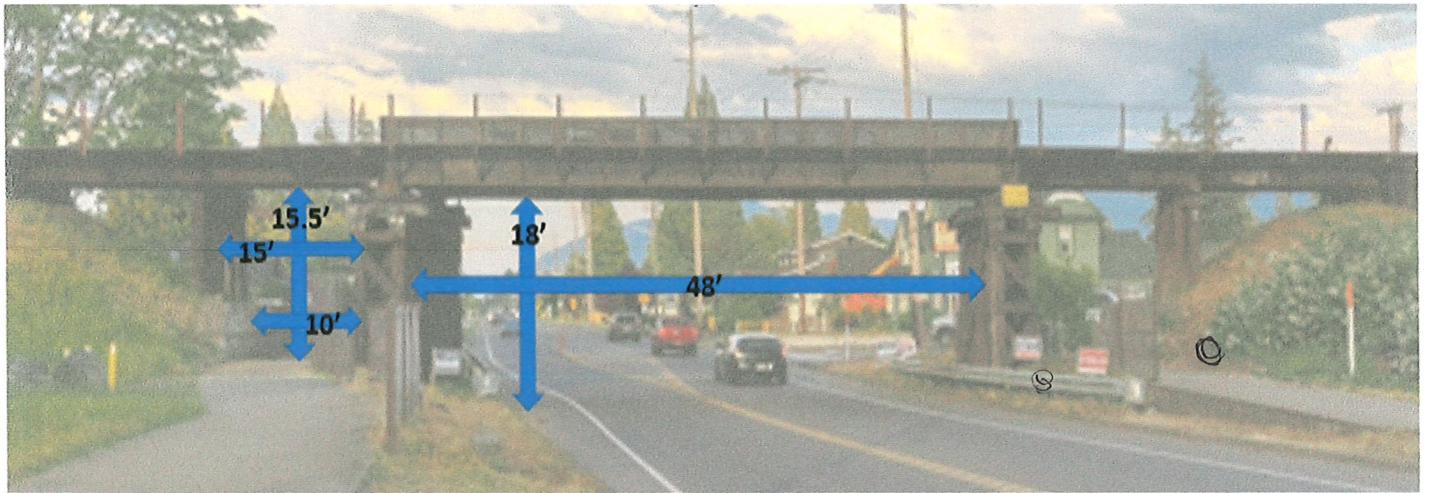
www.ci.sedro-woolley.wa.us

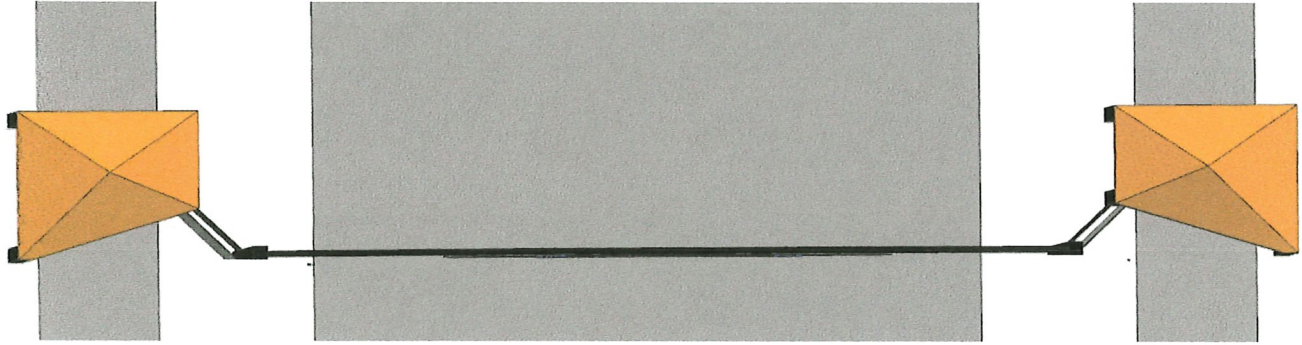
Parks and Recreation



As the Gateway to the Cascades with access to Glacier, Mt. Baker, Baker Lake, Canada, and Eastern Washington; it's exciting that so many people enjoy our Parks and Recreation.

www.ci.sedro-woolley.wa.us
Parks and Recreation





Hwy 20 Heading West Into Sedro-Woolley



Two, small font signs, with 8 listings at 45mph and 35mph.

Rusty, worn, spray painted bridge at the Access to Downtown



Hwy 20 Heading
East Into
Sedro-Woolley



Small Font Sign
With 8 Listings



First Sign Telling
Introducing
People to
Downtown
Access

Consider directing traffic downtown sooner.



Hwy 9 Heading
North To Sedro-
Woolley



Small Font Sign
With 8 Listings

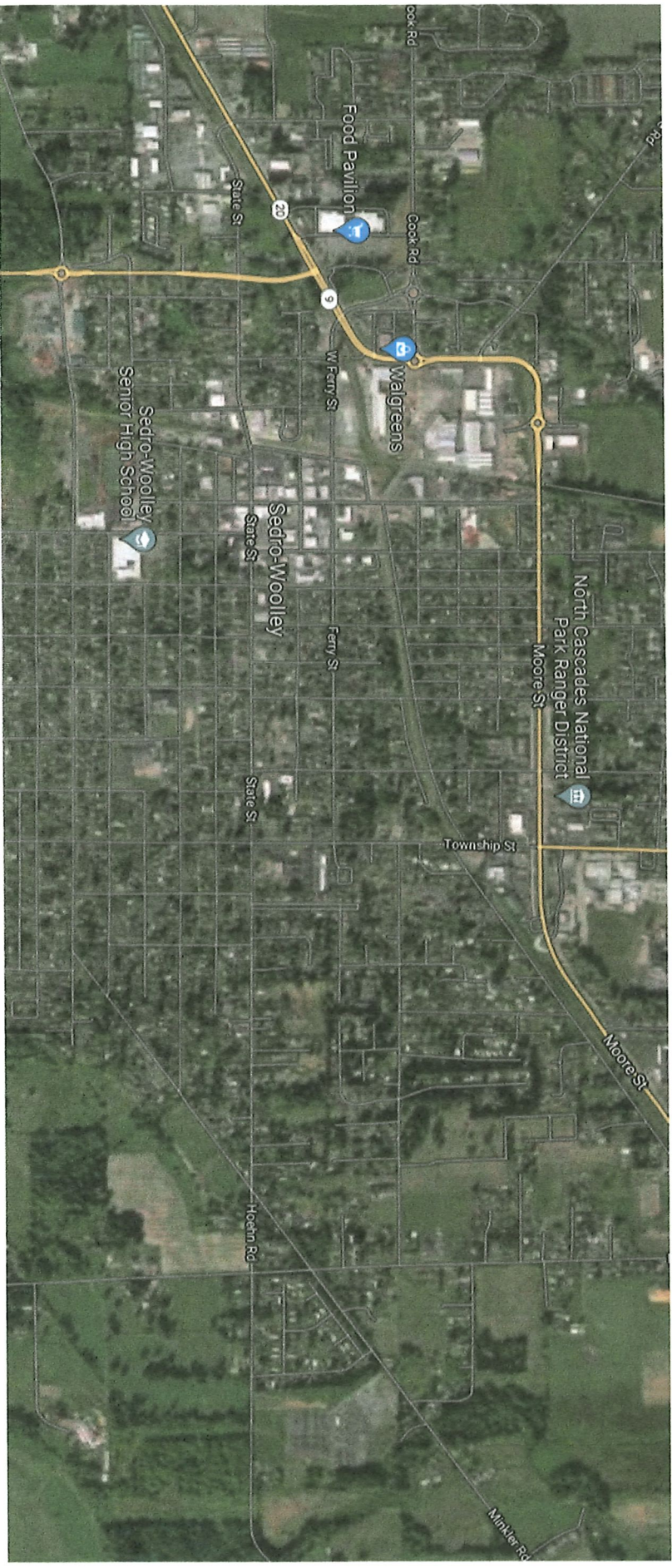


Hwy 9 Heading
South To Sedro-
Woolley

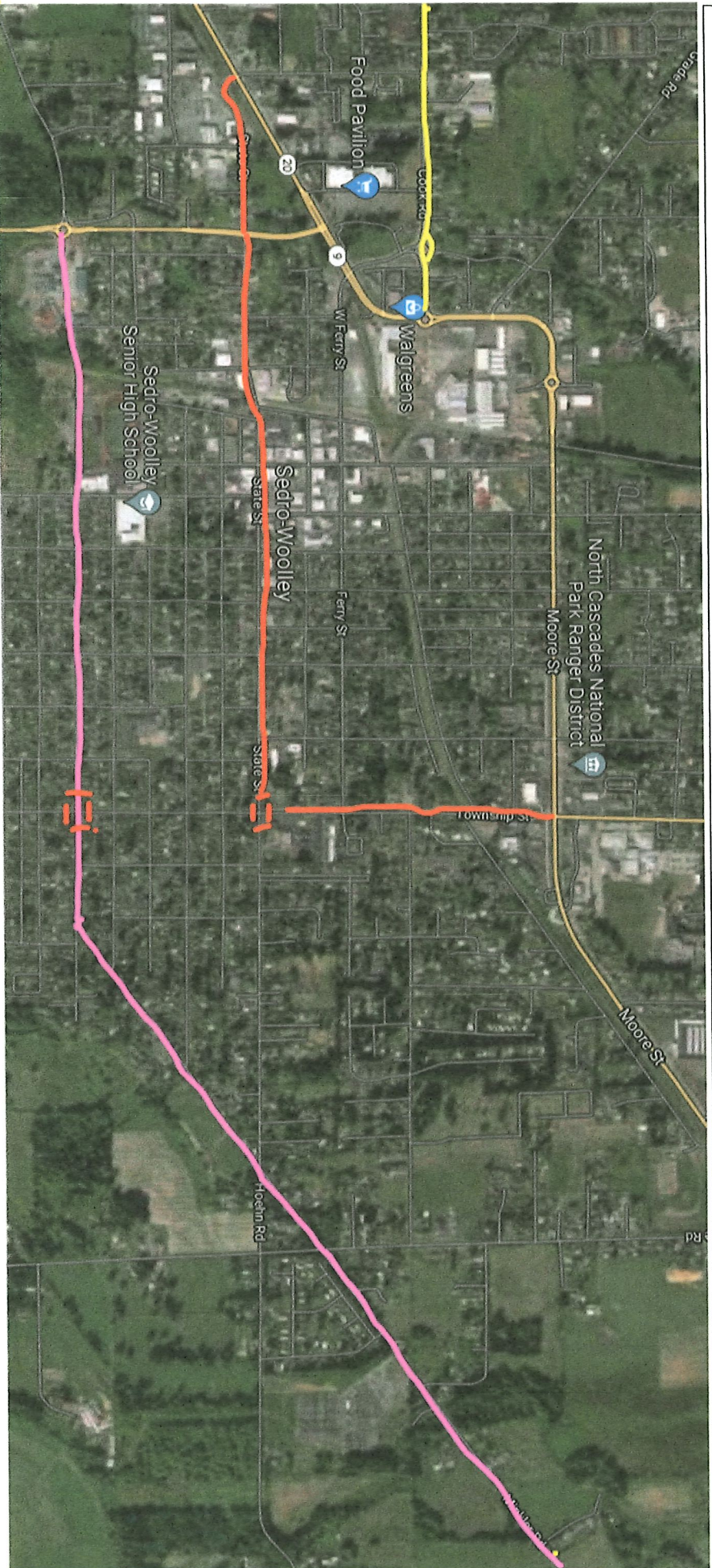


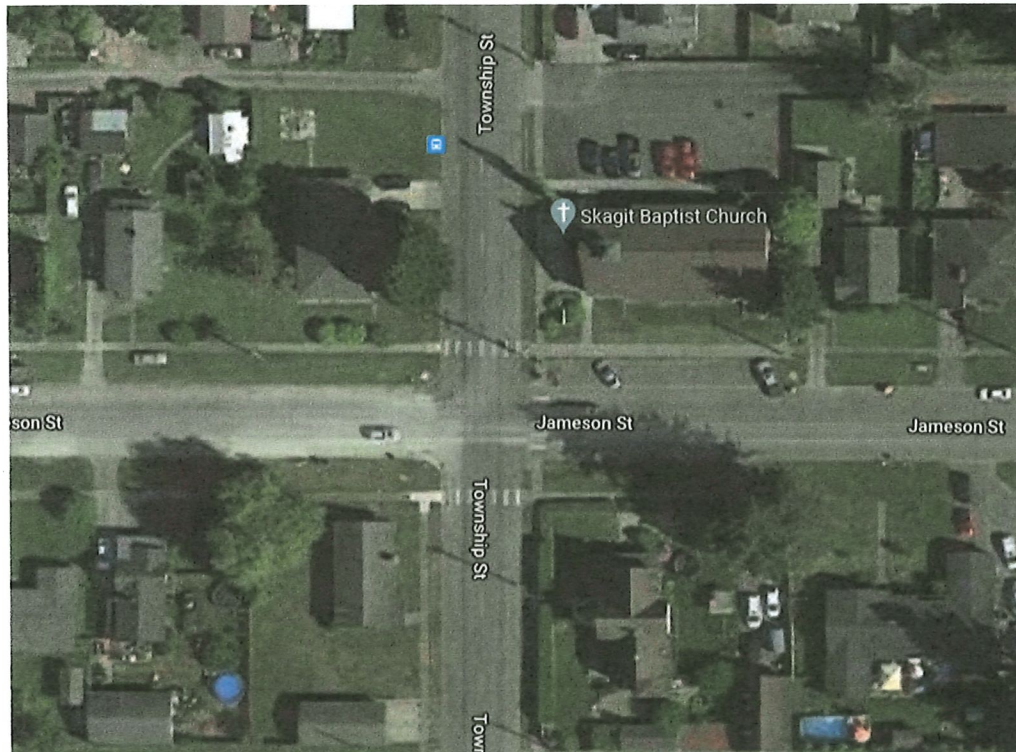
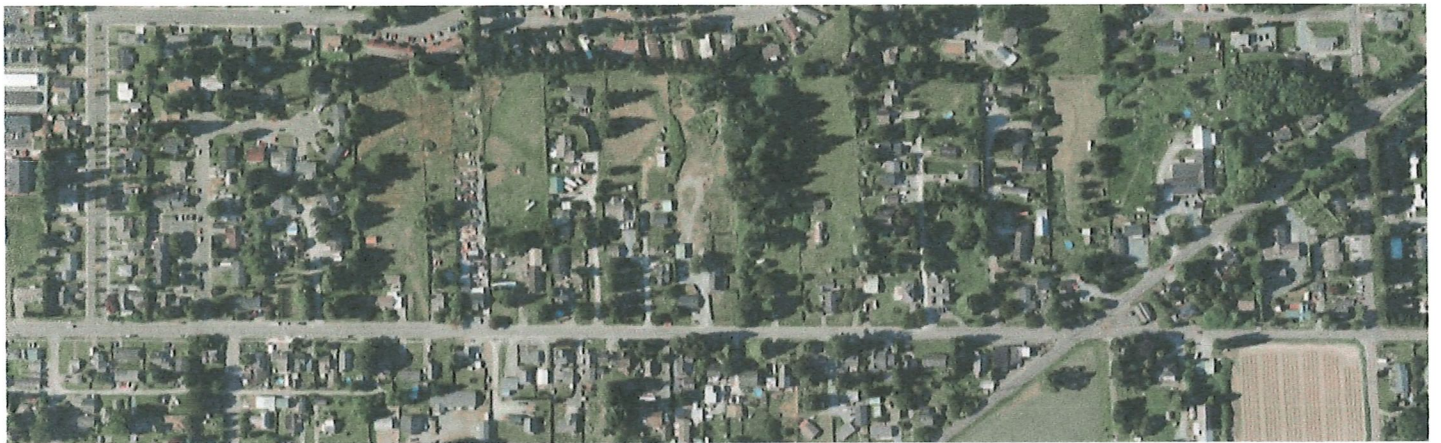
Trail Rd. From Cook
coming into
Sedro-Woolley

Right now, traffic flows through limited egress/ingress causing congestion on main routes or stop and go through town.



Open it up with allowing Minkler to become an arterial route for travel to Hwy 9.





Possibly have the Stop sign on Township instead of Jameson or make it a 4-way.

Create an Art Walk, an area with Potted Plants, Removable Artwork like log carvings and metal work as covered seating areas. Have Multiple cameras and have much of it fenced in. Work with local artist and other communities for art exchange programs.





Create events that involve the whole community, causing residents and visitors to travel throughout downtown enjoying the fun activities Sedro-Woolley has to offer.

Come up with and give incentive for other festival type events that can generate people spending exploring downtown.

See if there is a way to spruce up our Round-A-Bouts and Bring Life to like in Burlington with cool signage with colored lights and plant life as Councilwomen Kesti has mentioned.



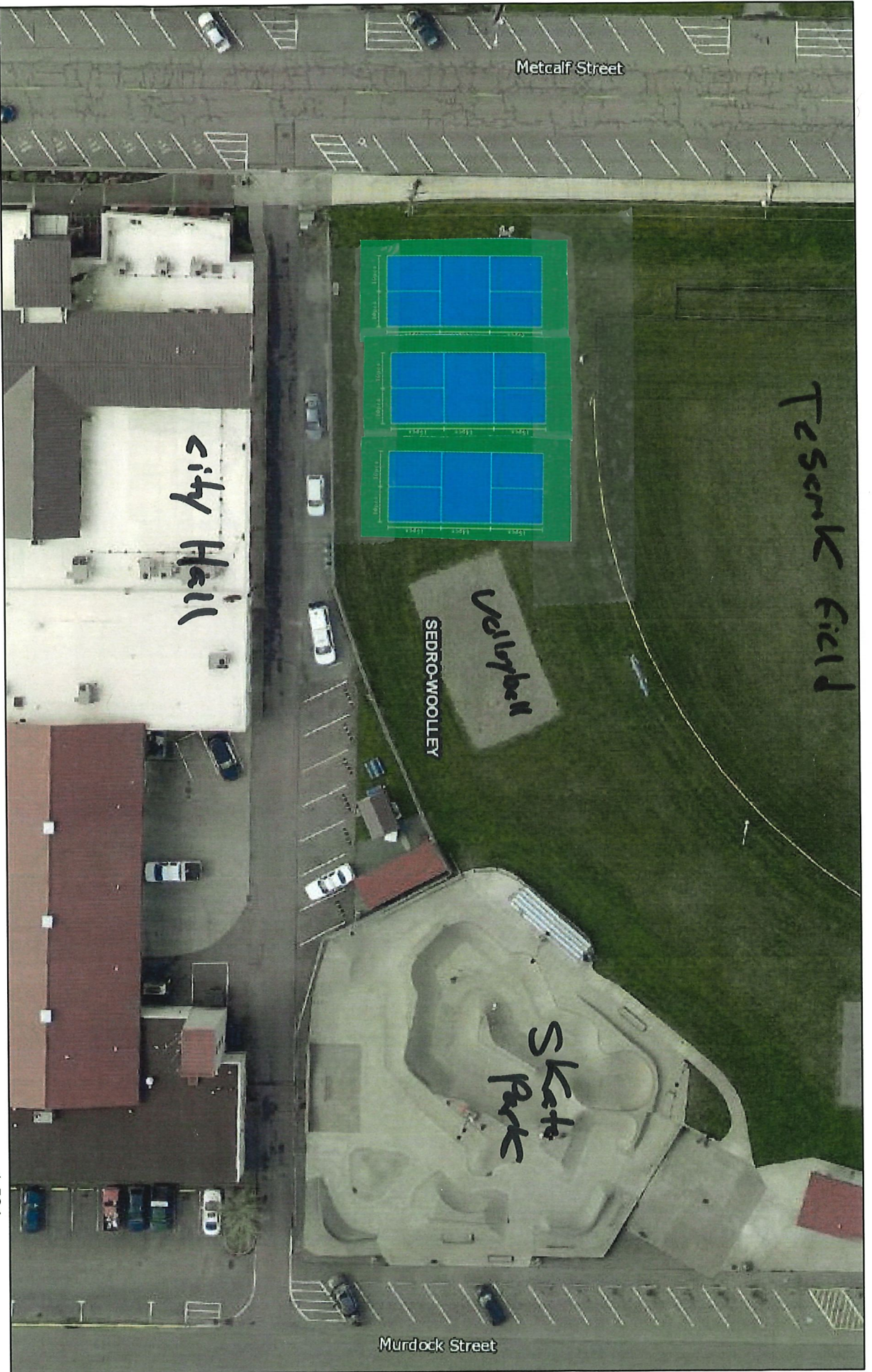
We have a beautiful community that has a very winter wonderland feel as well as a warm inviting summer feel downtown.

We have lots of amazing flowers, (**whom we should recognize for their amazing talent) as well as such amazing scenery.

There is so much opportunity if we wanted to tackle one, a few, or gather new ideas from the community, we could be busy for some time.


*Areas that have come up also include but are not limited to:

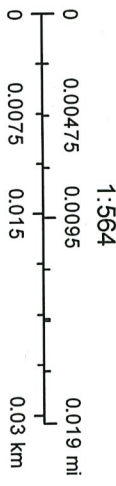
- Promote spending the day adventuring through the many parks and trails we have to offer by creating pamphlets that show case the opportunities available to residents and visitors.
- Create creative signages and archways
- Have an in dept interactive Info Board at Town Square for people to see where the parks and businesses are and what they have to offer.
- Utilize Youth programs to help promote healthy young recreation, including partnering with businesses to help keep the streets the downtown clean for a small donation to youth programs.
- Senior/Youth mentoring and tutoring programs including community art programs and community gardens
- Inside the City Educational classes for members of our community to inspire them to help take on and support more of these activities throughout the community
- Parking Garage Downtown
- Decorative Round-a-bout Centers, some with lighting



April 6, 2022

Legend

-  County Boundary
-  City Names
-  Road Labels
-  Hydro Labels
-  Regional Labels



Data Accuracy Warning: All GIS data was created from available public records and existing map sources. Map features have been adjusted to achieve a best-fit registration. While great care was taken in this process, maps from different sources rarely agree as to the precise location of geographic features. Map discrepancies can be as great as 300 feet.

RIVERFRONT PARK DEVELOPMENT SITE PLAN
R.C.O. PROJECT #22-1354

TOWNSHIP ST

Riverfront T-Ball North

DOG PARK

RIVER ROAD

Riverfront 1 East

Riverfront 2 West

RIVERFRONT PARK

Riverfront Rookie South

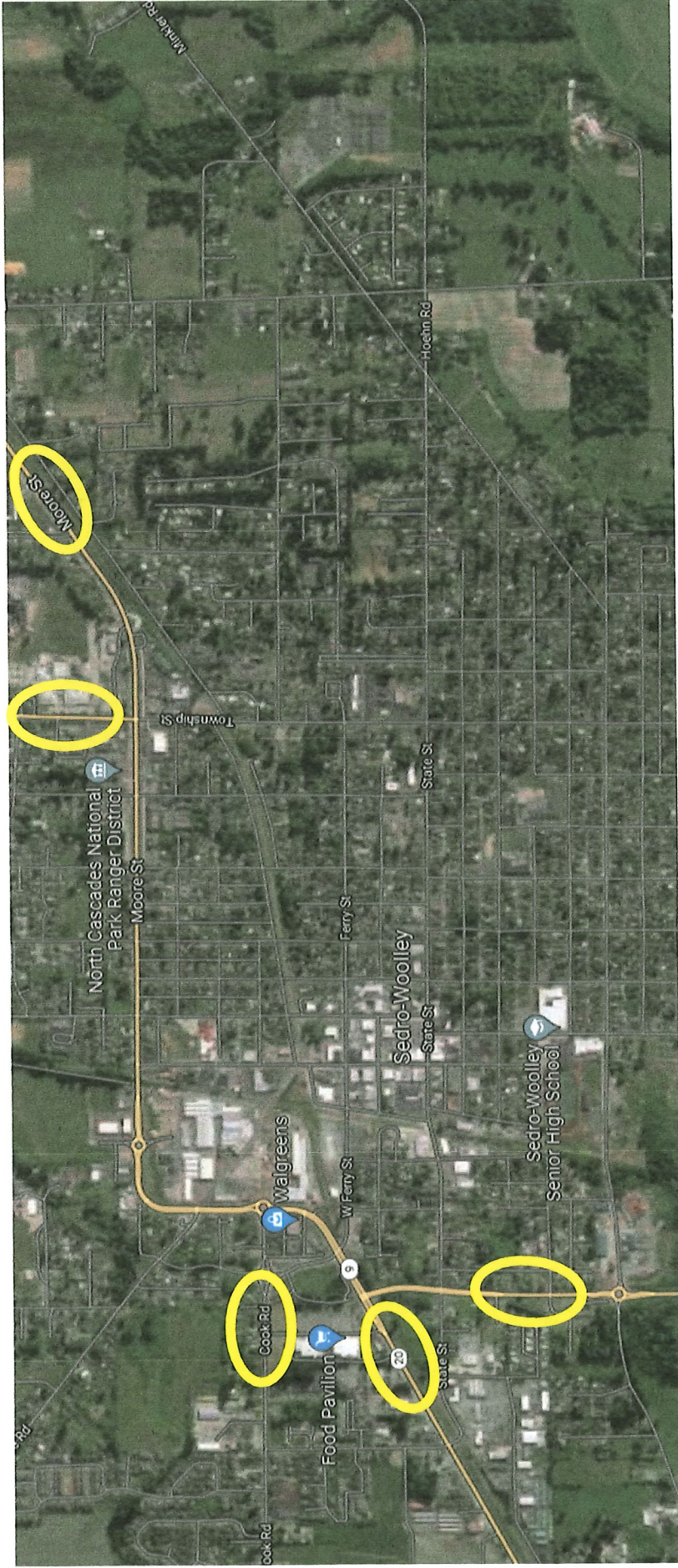
RIVER ROAD

SKAGIT RIVER

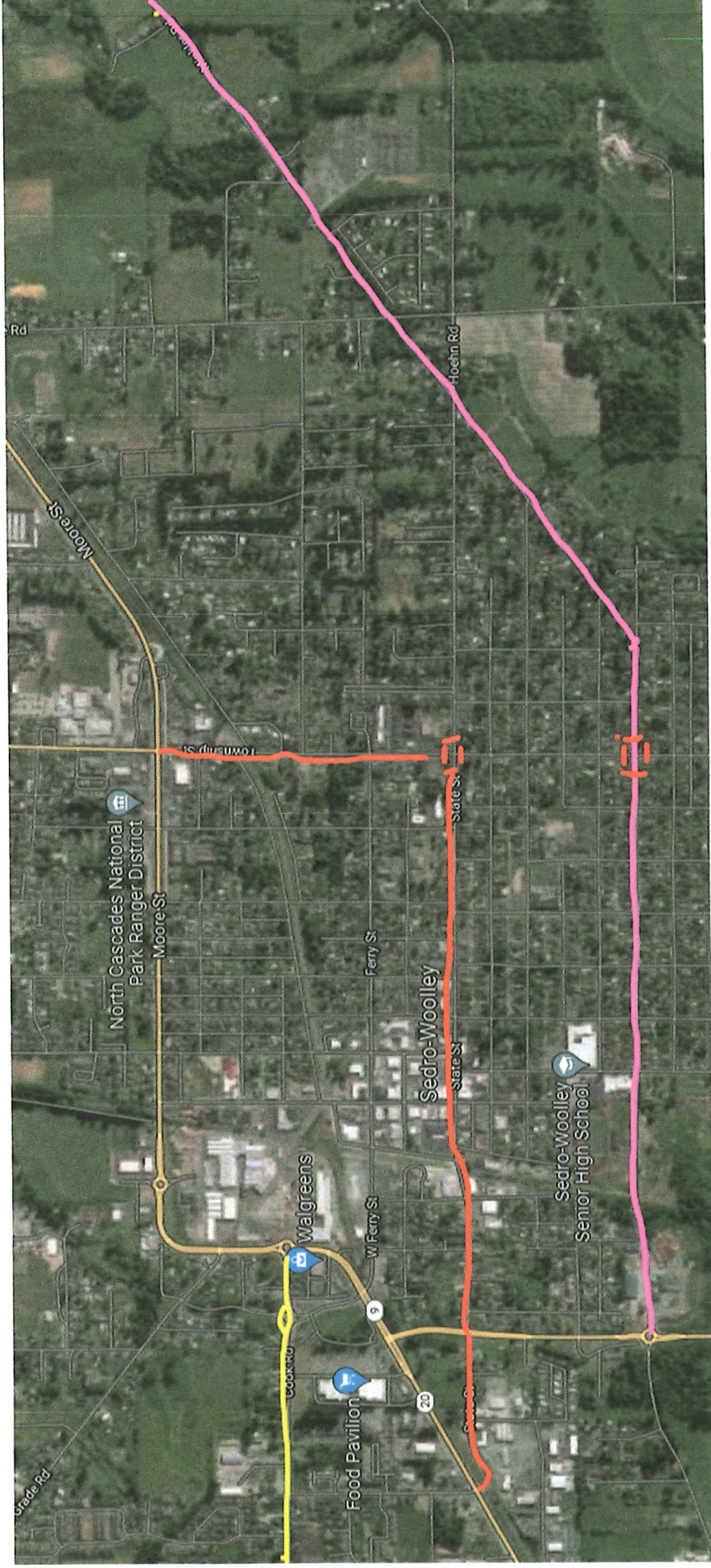


NTS





Right now, traffic flows through limited routes at the north edge causing congestion on main routes or stop and go through town.



If we open up Minkler to become an arterial route for travel to Hwy 9 as shown in the Pink Line it would divert some east traffic.

This is already part of the comprehensive plan but it doesn't really get looked at until after 2027.

As you can see with the Orange line, traffic runs through town if it wants to avoid the north end, and much of it would have no intention of staying or visiting.



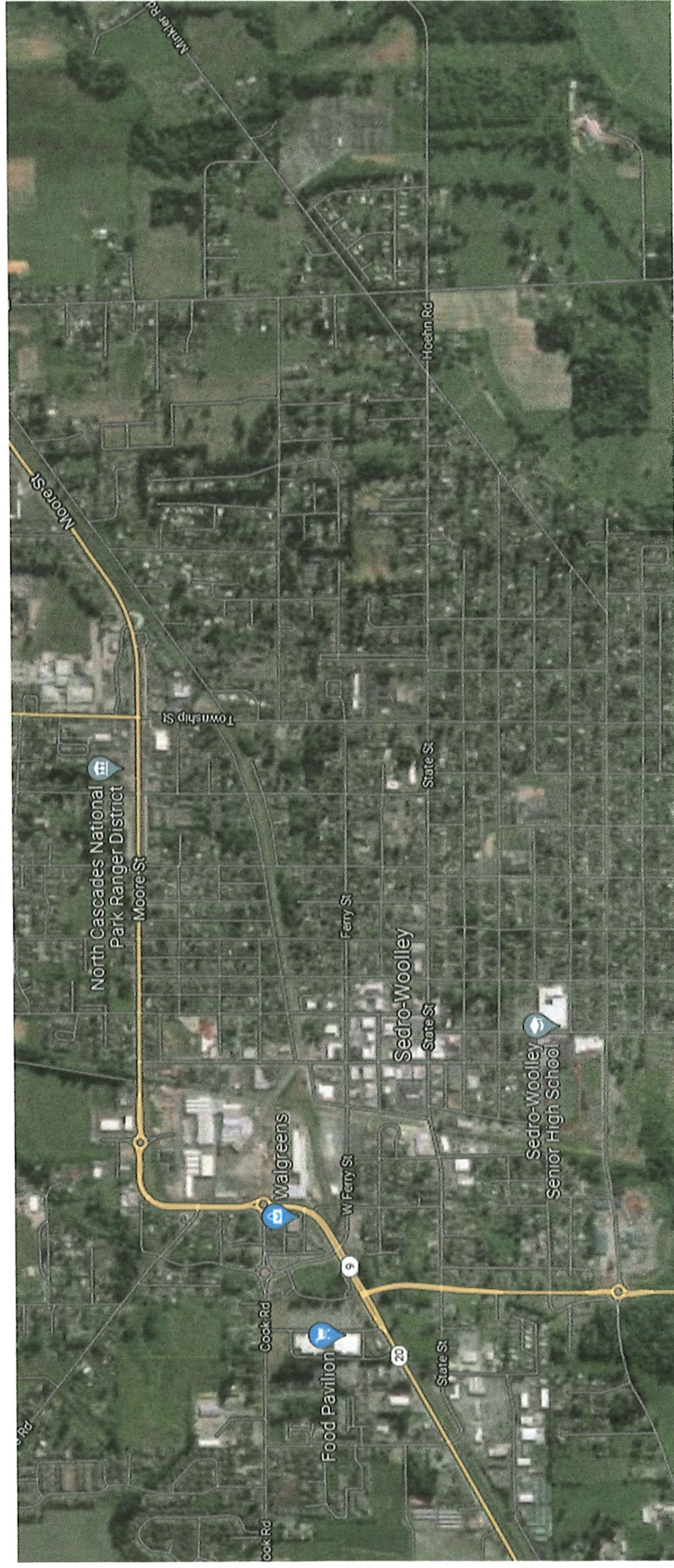
Hwy20 access to Minkler would need to be improved of course to allow for better flow and make it safer.



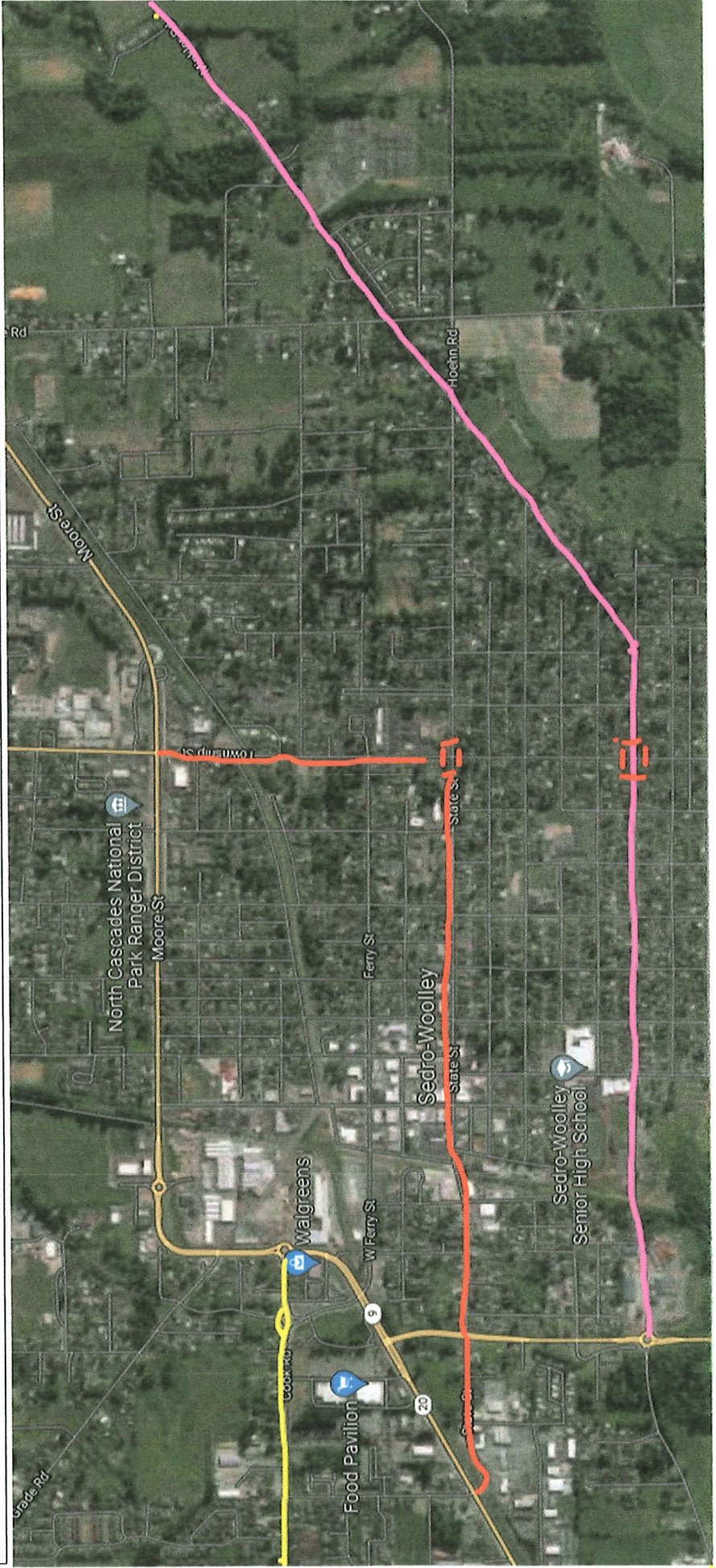
Possibly have the Stop sign on Township instead of Jameson or make it a 4-way.

I could a round-a-bout on Railroad maybe as well.

Right now, traffic flows through limited egress/ingress causing congestion on main routes or stop and go through town.



Open it up with allowing Minkler to become an arterial route for travel to Hwy 9.



RIVERFRONT PARK 1001 RIVER ROAD



RESERVE FOR YOUR
EVENT TODAY

With so many amenities riverfront park offers a great opportunity to attend an event or host one yourself.

- o On-site Park Caretaker
- o Restrooms
- o Covered Picnic Areas
- o Boat Launch
- o Off-Leash Dog Park
- o Playgrounds
- o Liberty Swing
- o Basketball Courts
- o Volleyball Court
- o Baseball/Softball Fields
- o Picnic Tables with BBQ Grills
- o Walking Paths
- o Amphitheater
- o Small East Picnic Shelter
- o Large West Picnic Shelter
- o Riverfront Kiwanis
- o Baseball/Softball Fields
- o Riverfront RV Park



With 131 Acres of Parks and recreation to choose from, there are plenty of great ways to stay entertained.

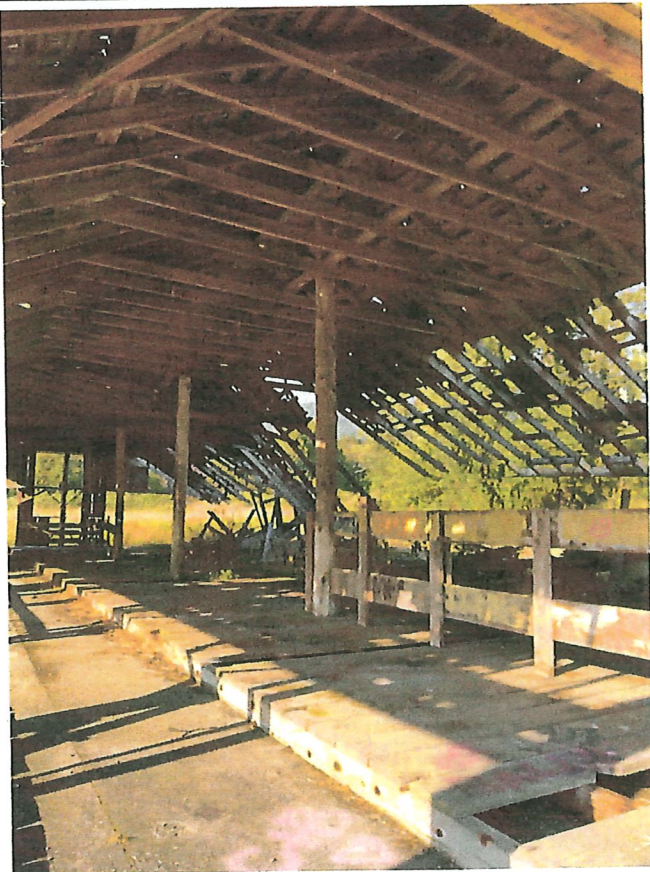
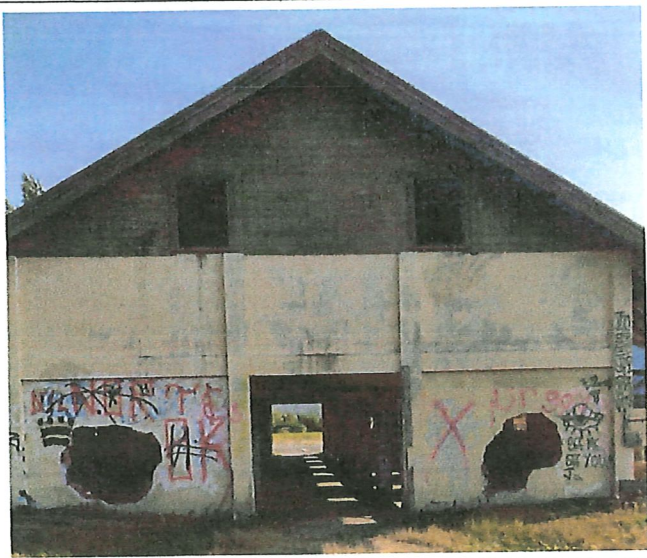
1. Riverfront Park
2. Memorial Park Campus
3. Bingham Park
4. Hammer Square
5. Lions Park
6. Hurr Osborne Park
7. Metcalf Skateboard Park
8. Tesarik Field
9. Winnie Houser Park & Playfields
10. Olmsted Park
11. Future Reed Park
12. Powerline Park
13. Fire Dept Training Site

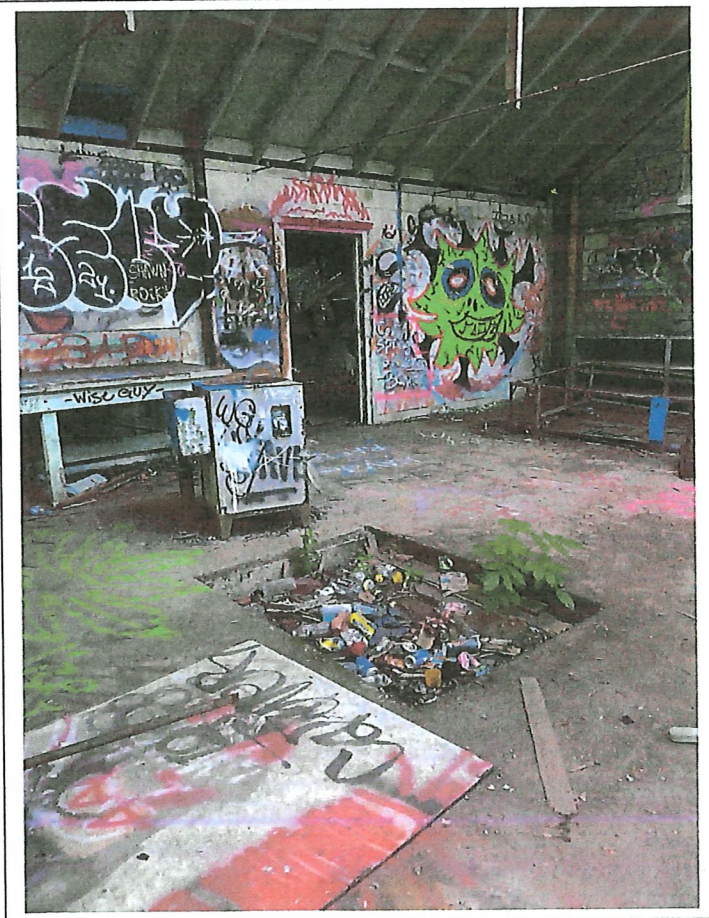
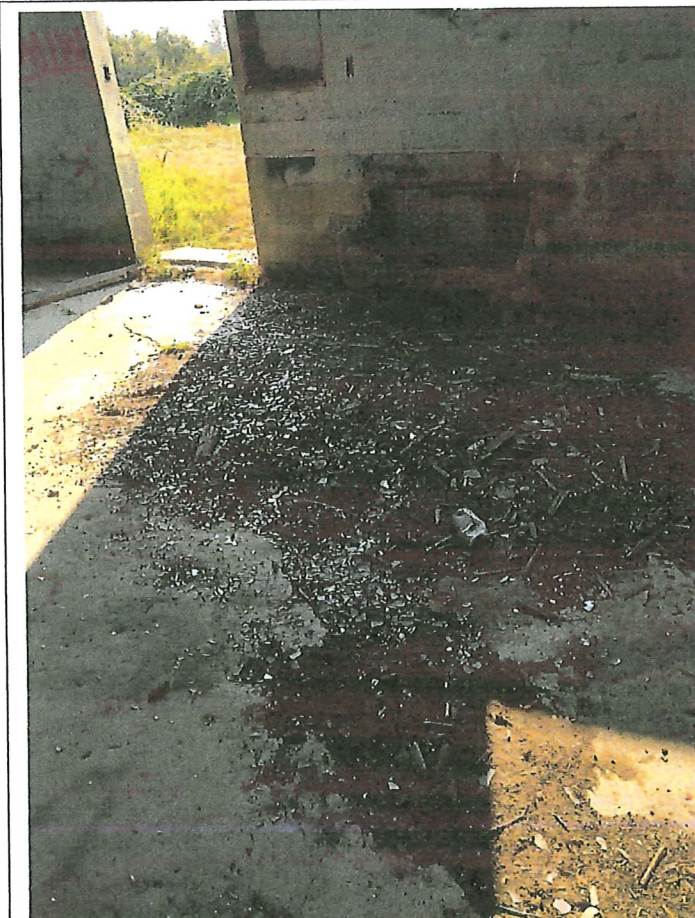
With parks, playfields, recreation areas, trails, shops, and restaurants; it's easy to enjoy a different experience every time you step outside. Whether you've lived here for your whole life or you're visiting from one of our neighboring communities, we know that you'll have a great time here in Sedro-Woolley.

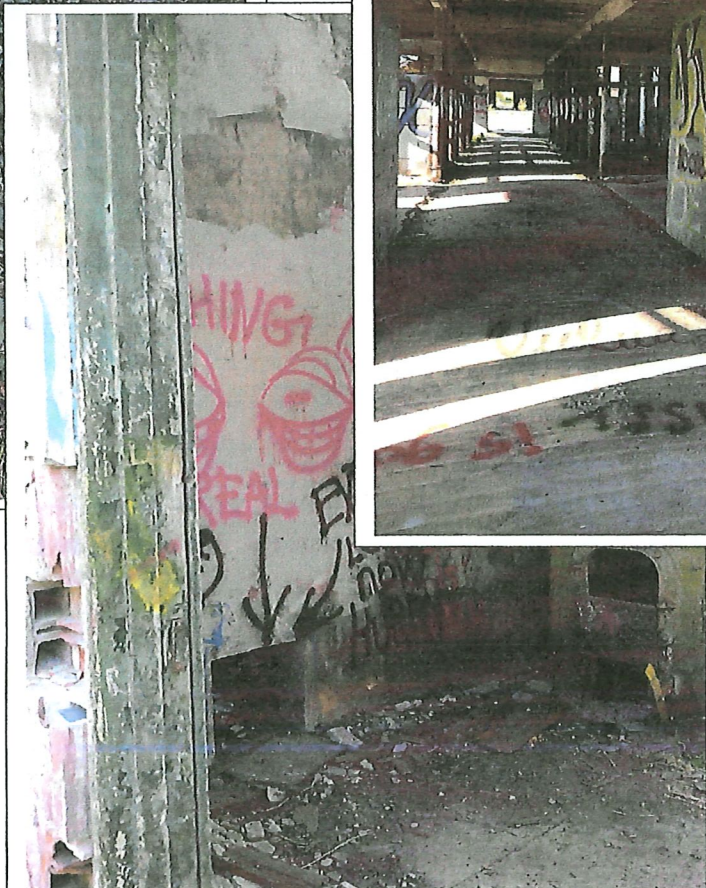
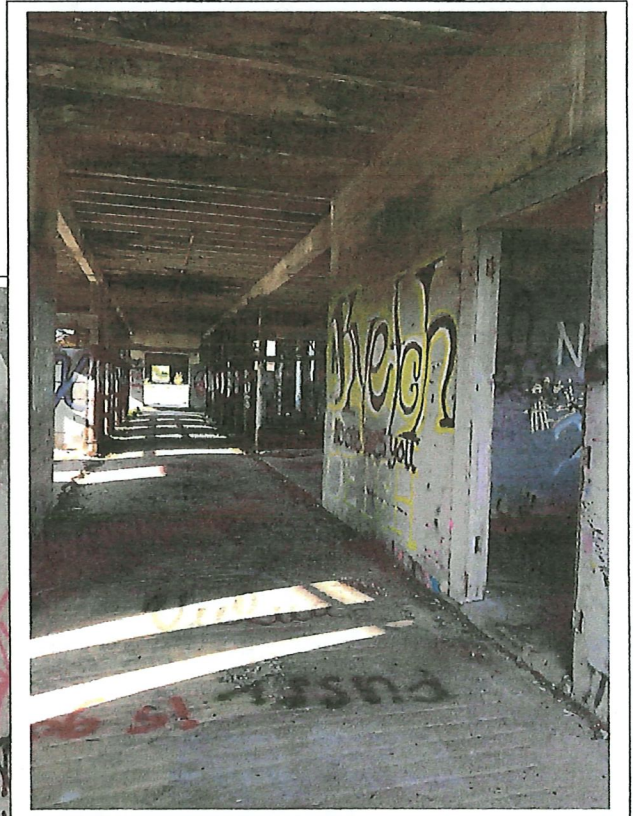
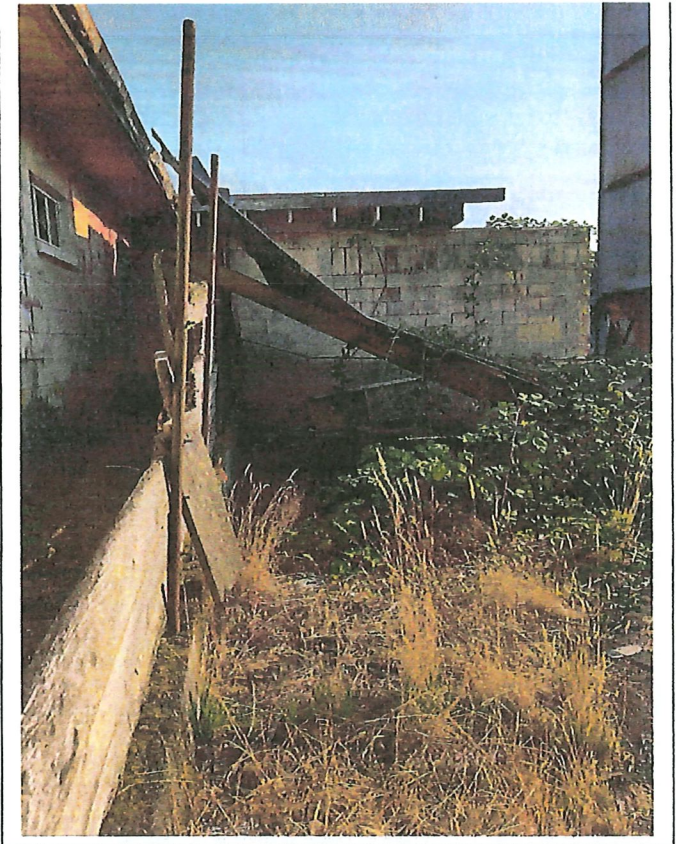
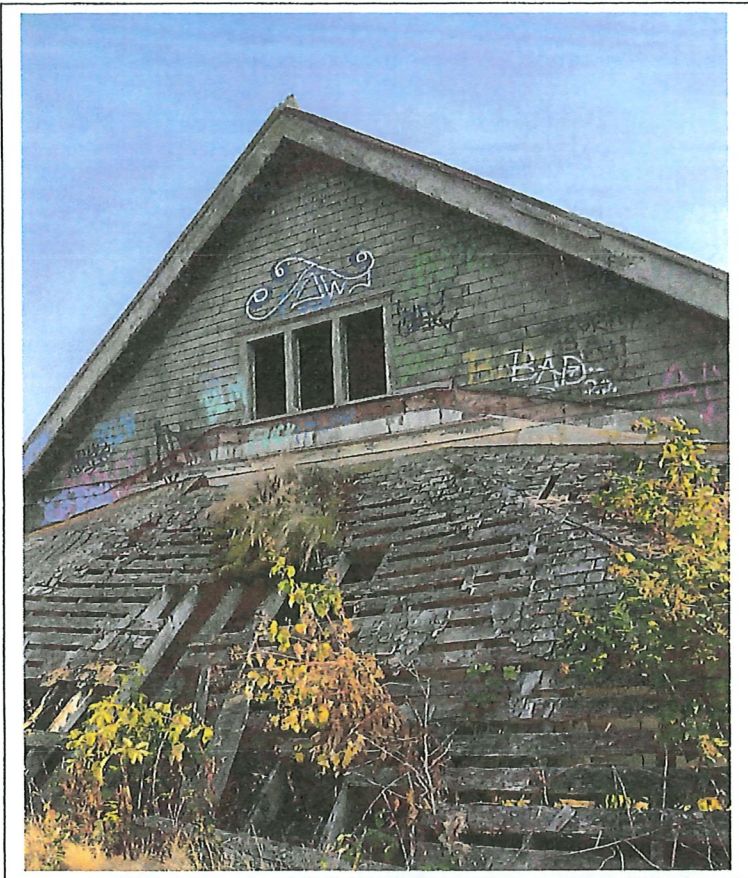
www.ci.sedro-woolley.wa.us

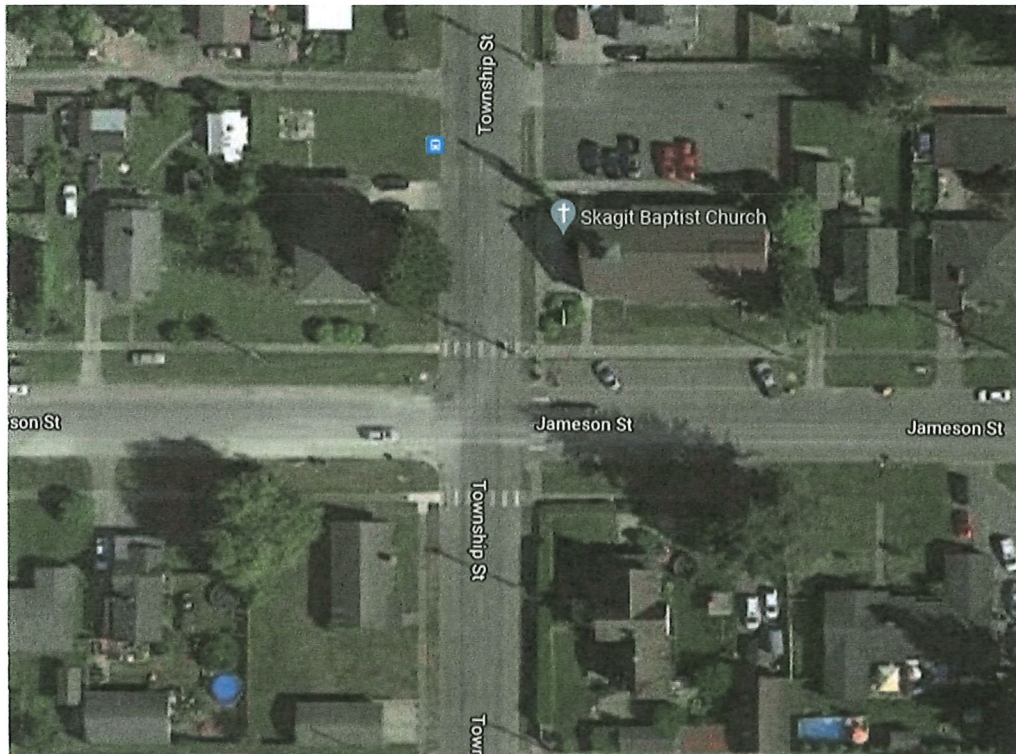
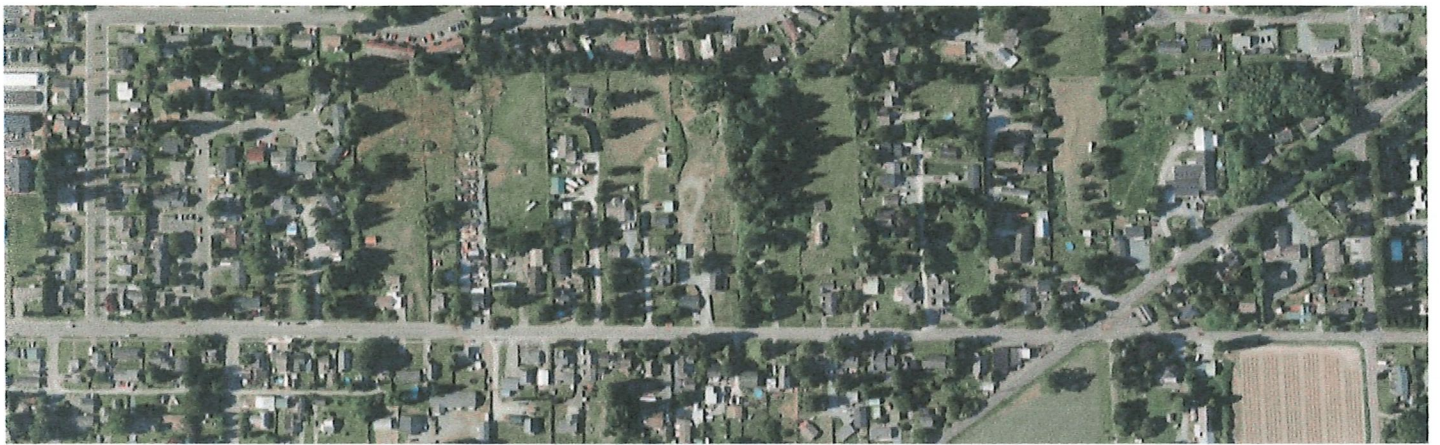
Parks and Recreation

Northern State Hospital Collaberated Clean Up









Possibly have the Stop sign on Township instead of Jameson or make it a 4-way.

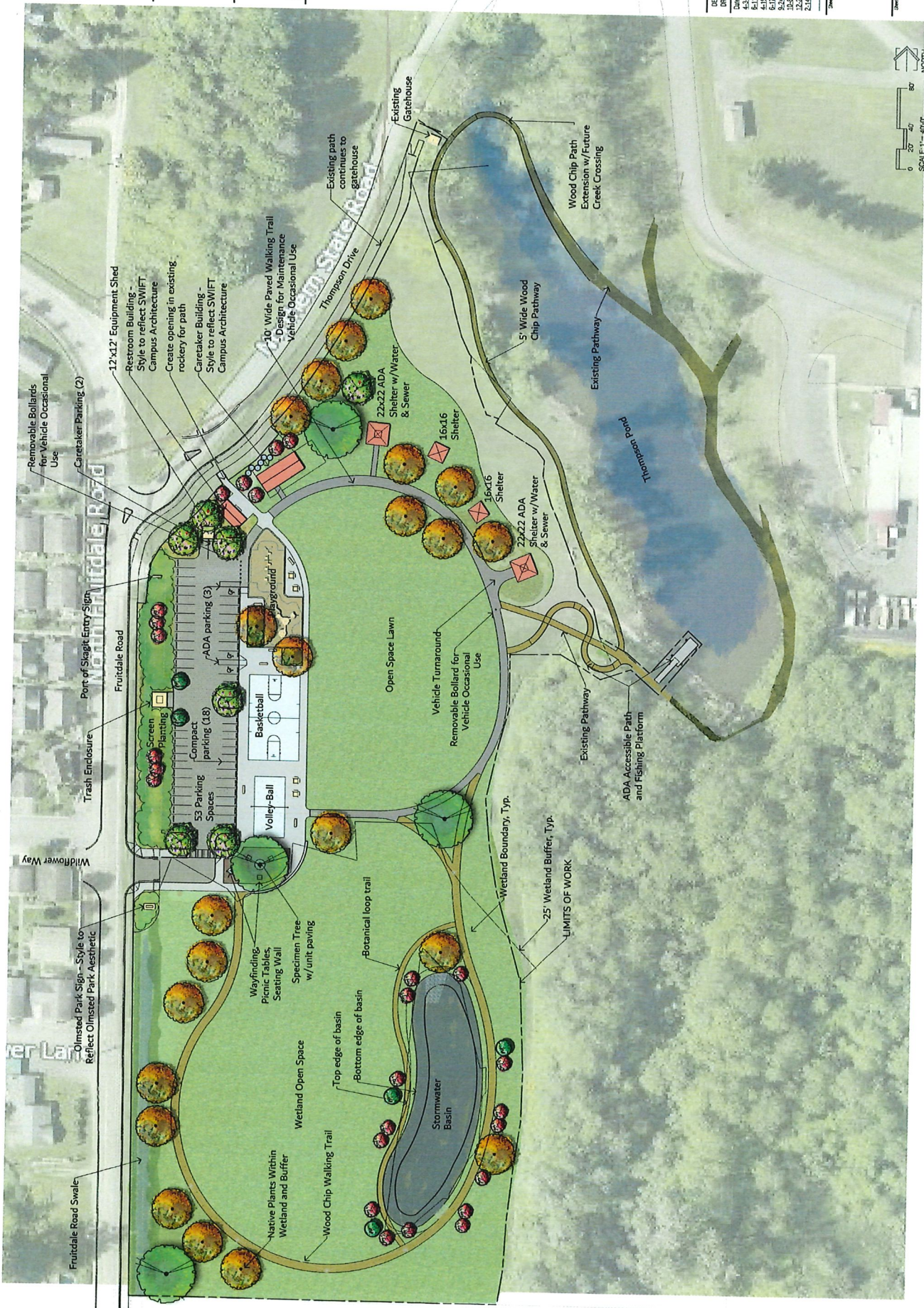
Olmsted Park

Fruitdale Road
 Seiro-Woolley, WA 98284

REVISIONS BY: P.A.	DATE	DESCRIPTION
1	10-1-18	Schematic Studies
2	10-1-18	Revised Schematic
3	10-1-18	Revised Schematic
4	10-1-18	Revised Schematic
5	10-1-18	Final Schematic
6	10-1-18	Final Schematic
7	10-1-18	Final Schematic
8	10-1-18	Final Schematic
9	10-1-18	Final Schematic
10	10-1-18	Final Schematic
11	10-1-18	Final Schematic
12	10-1-18	Final Schematic
13	10-1-18	Final Schematic
14	10-1-18	Final Schematic
15	10-1-18	Final Schematic
16	10-1-18	Final Schematic
17	10-1-18	Final Schematic
18	10-1-18	Final Schematic
19	10-1-18	Final Schematic
20	10-1-18	Final Schematic
21	10-1-18	Final Schematic
22	10-1-18	Final Schematic
23	10-1-18	Final Schematic
24	10-1-18	Final Schematic
25	10-1-18	Final Schematic
26	10-1-18	Final Schematic
27	10-1-18	Final Schematic
28	10-1-18	Final Schematic
29	10-1-18	Final Schematic
30	10-1-18	Final Schematic
31	10-1-18	Final Schematic
32	10-1-18	Final Schematic
33	10-1-18	Final Schematic
34	10-1-18	Final Schematic
35	10-1-18	Final Schematic
36	10-1-18	Final Schematic
37	10-1-18	Final Schematic
38	10-1-18	Final Schematic
39	10-1-18	Final Schematic
40	10-1-18	Final Schematic
41	10-1-18	Final Schematic
42	10-1-18	Final Schematic
43	10-1-18	Final Schematic
44	10-1-18	Final Schematic
45	10-1-18	Final Schematic
46	10-1-18	Final Schematic
47	10-1-18	Final Schematic
48	10-1-18	Final Schematic
49	10-1-18	Final Schematic
50	10-1-18	Final Schematic
51	10-1-18	Final Schematic
52	10-1-18	Final Schematic
53	10-1-18	Final Schematic
54	10-1-18	Final Schematic
55	10-1-18	Final Schematic
56	10-1-18	Final Schematic
57	10-1-18	Final Schematic
58	10-1-18	Final Schematic
59	10-1-18	Final Schematic
60	10-1-18	Final Schematic
61	10-1-18	Final Schematic
62	10-1-18	Final Schematic
63	10-1-18	Final Schematic
64	10-1-18	Final Schematic
65	10-1-18	Final Schematic
66	10-1-18	Final Schematic
67	10-1-18	Final Schematic
68	10-1-18	Final Schematic
69	10-1-18	Final Schematic
70	10-1-18	Final Schematic
71	10-1-18	Final Schematic
72	10-1-18	Final Schematic
73	10-1-18	Final Schematic
74	10-1-18	Final Schematic
75	10-1-18	Final Schematic
76	10-1-18	Final Schematic
77	10-1-18	Final Schematic
78	10-1-18	Final Schematic
79	10-1-18	Final Schematic
80	10-1-18	Final Schematic
81	10-1-18	Final Schematic
82	10-1-18	Final Schematic
83	10-1-18	Final Schematic
84	10-1-18	Final Schematic
85	10-1-18	Final Schematic
86	10-1-18	Final Schematic
87	10-1-18	Final Schematic
88	10-1-18	Final Schematic
89	10-1-18	Final Schematic
90	10-1-18	Final Schematic
91	10-1-18	Final Schematic
92	10-1-18	Final Schematic
93	10-1-18	Final Schematic
94	10-1-18	Final Schematic
95	10-1-18	Final Schematic
96	10-1-18	Final Schematic
97	10-1-18	Final Schematic
98	10-1-18	Final Schematic
99	10-1-18	Final Schematic
100	10-1-18	Final Schematic

Rendered Plan

SCALE: 1" = 40'-0"



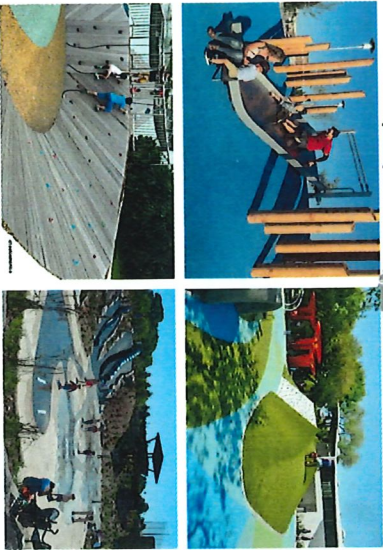
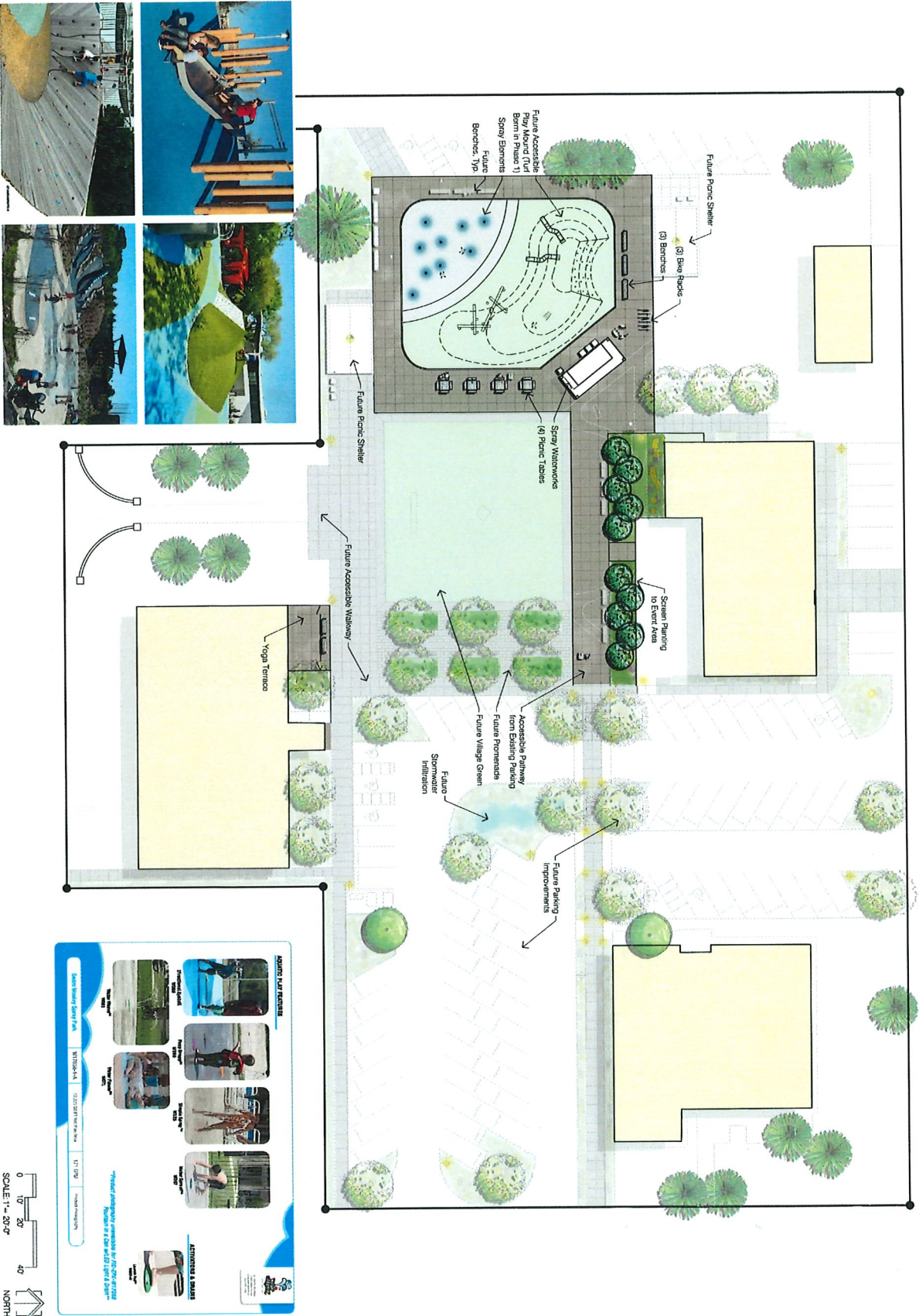


PACIFIC
LANDSCAPE
ARCHITECTURE

1834 BROADWAY
SEATTLE, WA 98101
PH: 206.464.4225

Memorial Park
Improvements - PH1
Sara-Molly
Washington

DRAFT

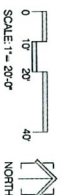


ASBESTOS SURVEILLANCE

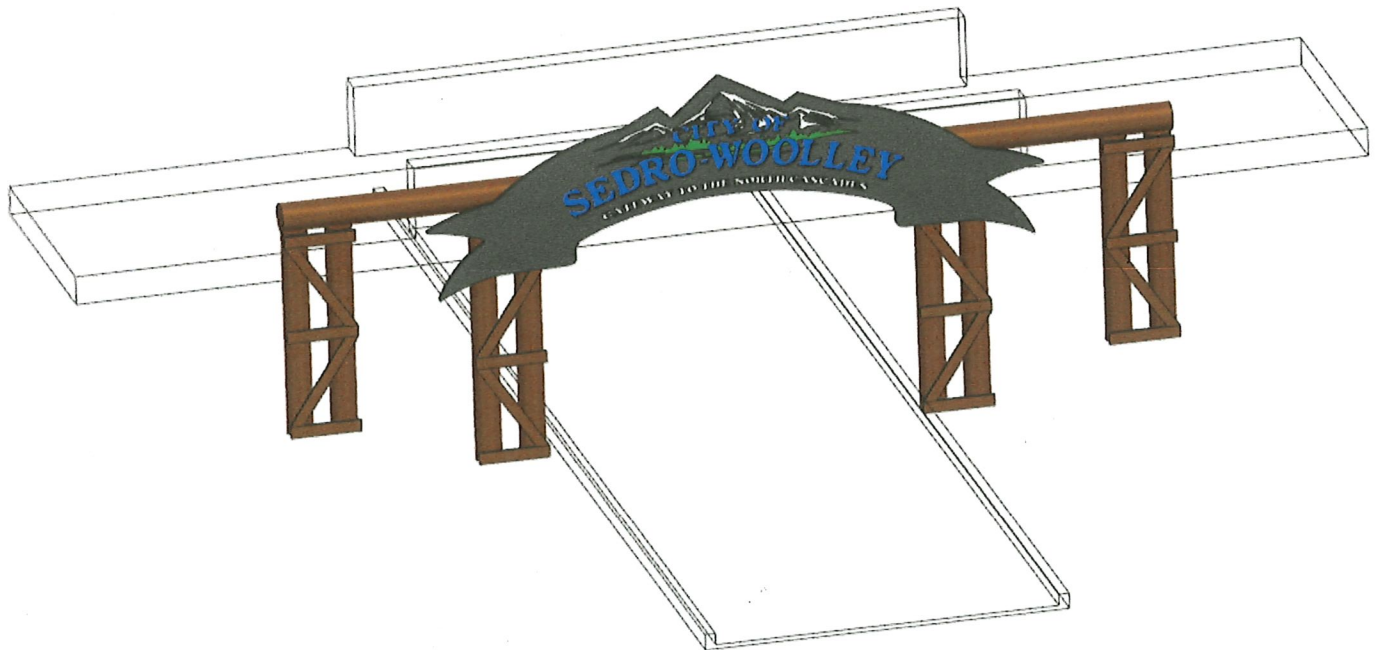
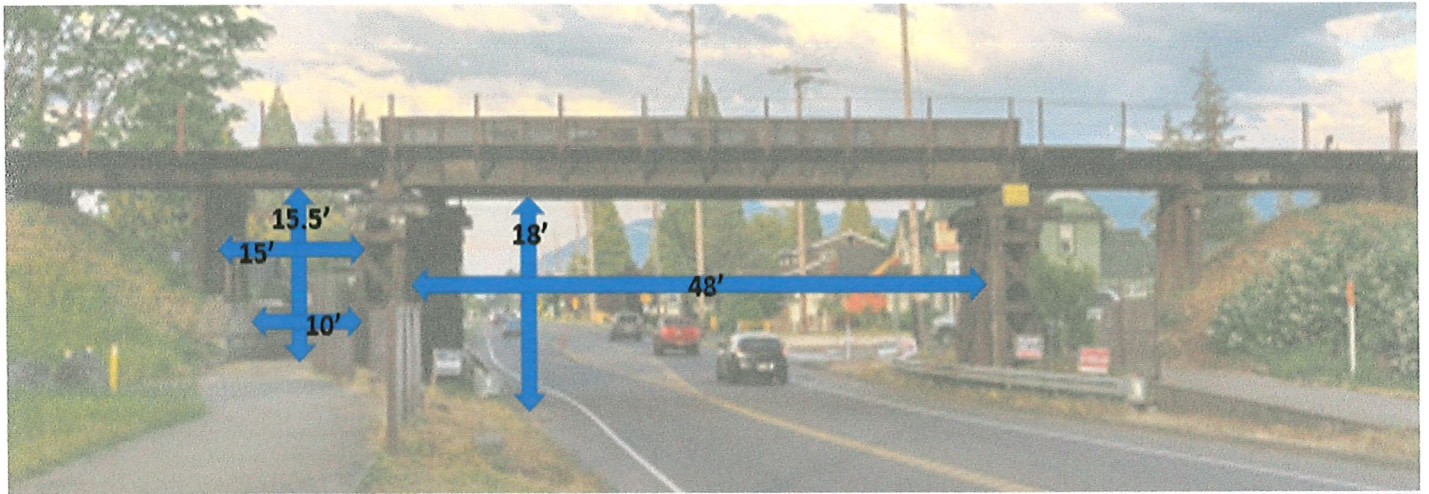
Location	Survey Date	Surveyor
Phase 1 - Park	10/15/2014	...
Phase 2 - Park	10/15/2014	...
Phase 3 - Park	10/15/2014	...
Phase 4 - Park	10/15/2014	...

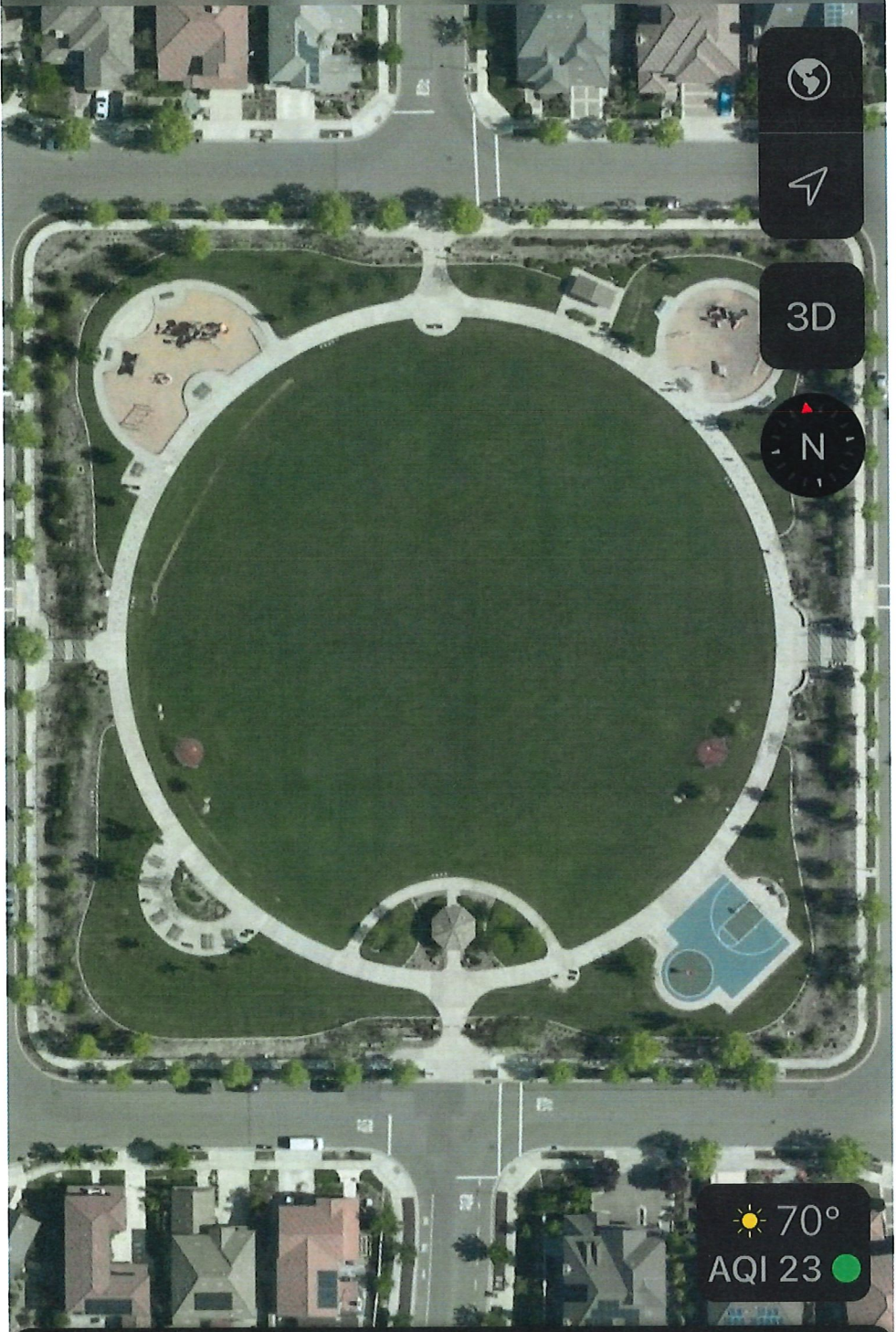
ASBESTOS & LEAD

1834 BROADWAY
SEATTLE, WA 98101
PH: 206.464.4225



DESIGNED BY: P.A.
DRAWN BY: PRL
DATE: 12.11.13
ISSUE: 02X EXHIBIT





Navigation and map controls including a globe icon, a compass icon, a 3D view toggle, and a circular compass showing North (N).

Weather and air quality information: 70° (with sun icon) and AQI 23 (with green dot icon).

Piccadilly Square Park

Close button (X)

RIVERFRONT PARK 1001 RIVER ROAD



With so many amenities riverfront park offers a great opportunity to attend an event or host one yourself.

- On-site Park Caretaker
- Restrooms
- Covered Picnic Areas
- Boat Launch
- Off-Leash Dog Park
- Playgrounds
- Liberty Swing
- Basketball Courts
- Volleyball Court
- Baseball/Softball Fields
- Picnic Tables with BBQ Grills
- Walking Paths
- Amphitheater
- Small East Picnic Shelter
- Large West Picnic Shelter
- Riverfront Kiwanis
- Baseball/Softball Fields
- Riverfront RV Park

With 131 Acres of Parks and recreation to choose from, there are plenty of great ways to stay entertained.

1. Riverfront Park
2. Memorial Park Campus
3. Bingham Park
4. Hammer Square
5. Lions Park
6. Harry Osborne Park
7. Metcalf Skateboard Park
8. Tesarik Field
9. Winnie Houser Park & Playfields
10. Olmsted Park
11. Future Reed Park
12. Powerline Park
13. Fire Dept Training Site

With parks, playfields, recreation areas, trails, shops, and restaurants; it's easy to enjoy a different experience every time you step outside. Whether you've lived here for your whole life or you're visiting from one of our neighboring communities, we know that you'll have a great time here in Sedro-Woolley.

www.ci.sedro-woolley.wa.us

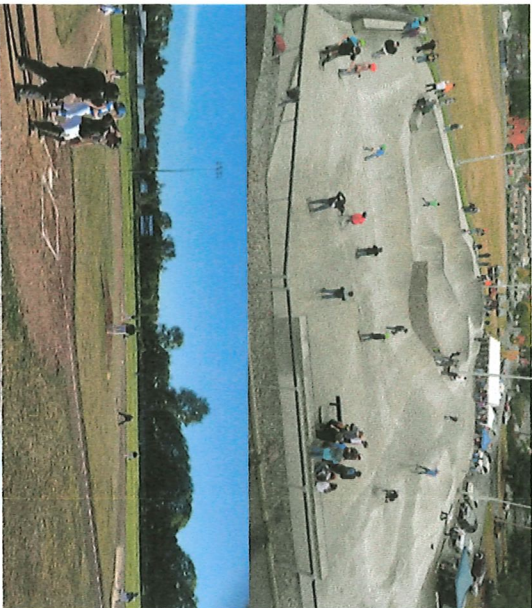
Parks and Recreation

RESERVE FOR YOUR
EVENT TODAY



YOUTH ACTIVITIES

SKATE PARK, PICKLEBALL, DISC GOLF, BASEBALL, SOCCER, AND MANY OTHER ACTIVITIES



As the Gateway to the Cascades with access to Glacier, Mt. Baker, Baker Lake, Canada, and Eastern Washington; it's exciting that so many people enjoy our Parks and Recreation.

COMING SOON

Lots of new and exciting parks and activities in the works. Our Parks and Rec Department with the vision and support from our community makes Sedro-Woolley a great place to enjoy.



Olmsted Park Development

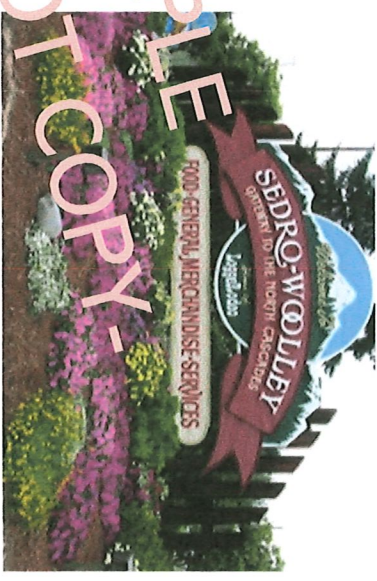
Memorial Park Renovation



www.ci.sedro-woolley.wa.us
Parks and Recreation

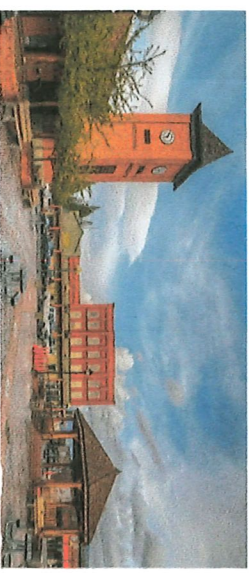
Enjoy Our

Beautiful



YOUR FAMILY, FRIENDS, AND YOU, WILL FIND LOTS OF FUN PLACES AND ACTIVITIES TO ENJOY WHEN YOU TAKE ADVANCE OF ALL WE HAVE TO OFFER.

www.ci.sedro-woolley.wa.us
Parks and Recreation





THE PHILBIN GROUP
 Landscape Architecture
 11200 1st Avenue, Suite 100
 Bothell, WA 98021
 (206) 487-4400
 (206) 487-4400

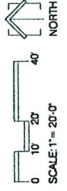
205 N Reed Street
 Park Feasibility
 205 N Reed Street
 Sarno-Woolley, Washington 98284



DESIGNED BY: TPG	
DRAWN BY: PL	
DATE: 10/10/11	
PROJECT NO: 6-23-11, Block Plan	

Base Plan

L-2



City of Sedro-Woolley Parks and Public Facilities

